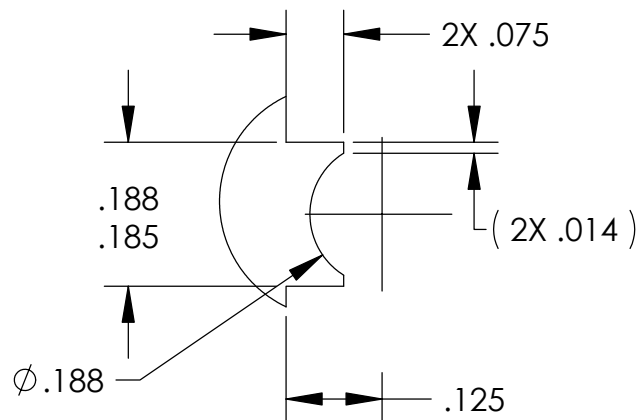
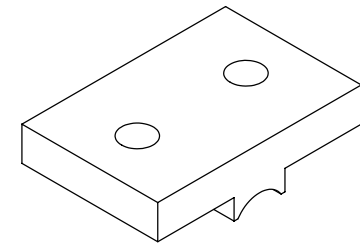
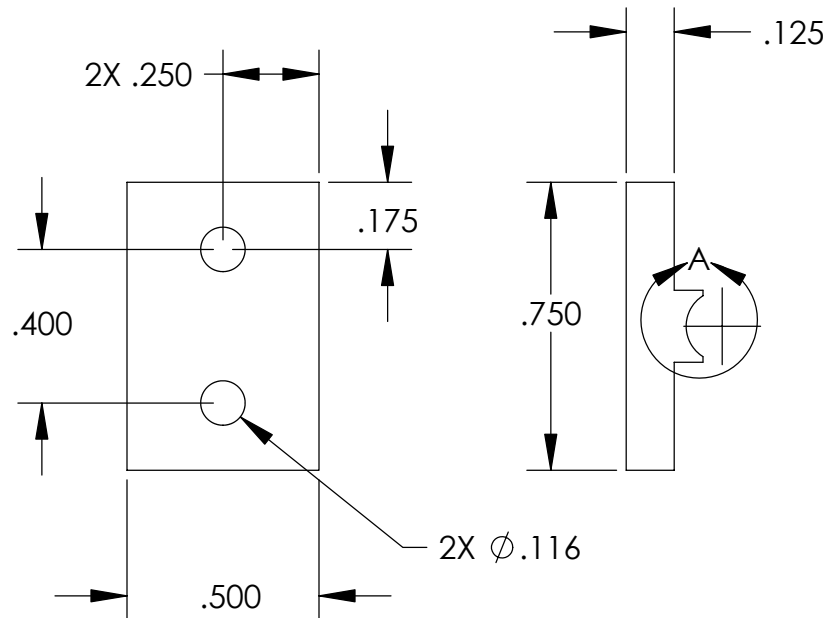


REVISIONS		
REV	DESCRIPTION	DATE



DETAIL A
SCALE 4 : 1

NOTES:
1. .185-.188 FEATURE MATES WITH SLOTS
OF P/NS -168, -174, 198, 301,
302, 313 & 315.

UNLESS OTHERWISE SPECIFIED:		<div>High Precision Devices</div>				
DIMENSIONS ARE IN INCHES DECIMAL TOLERANCES: .X ±.030 .XX ±.015 .XXX ±.005						
ANGULAR TOL: ± 1° SURFACE ROUGHNESS:63/√						
INTERNAL AND EXTERNAL SURFACE INTERSECTIONS SHALL BE UNIFORMLY FINISHED WITH CHAMFER .005/.010 X 45° OR RADIUS .005/.010. CHAMFER ALL THREADED HOLES 110° OF MAJOR DIAMETER X 45°		1668 Valtec Lane, Suite C, Boulder, Colorado 80301 Phone: (303) 447-2558 Fax: (303) 447-2548 Web Site: www.hpd-online.com				
		TITLE: <div>p02101-199 thermal sink, precool</div>				
		CONFIGURATION: 00-Default				
MATERIAL:	OF Copper	SIZE	QTY PER ASSM: 22	SCALE: 2:1	SHEET 1 OF 1	REV
FINISH:	NONE	A	DATE: 5/20/2004	DRAWN BY: C. Danaher		A